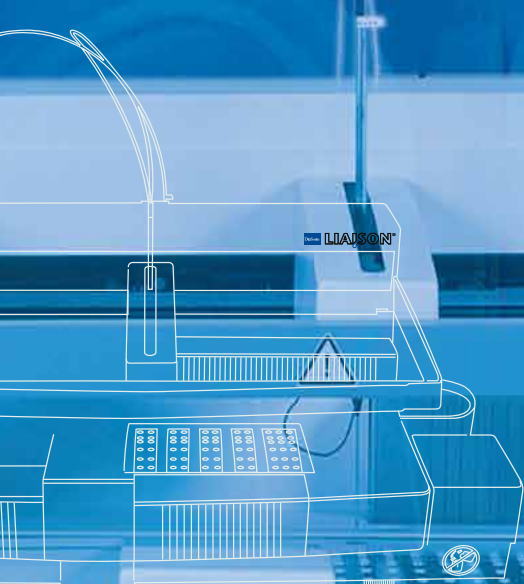


# Flexibility

# without compromise



- ◆ Efficient from the Start
- ◆ Maximum Flexibility
- ◆ Prepared for all Eventualities

For effective use  
of Lab Resources

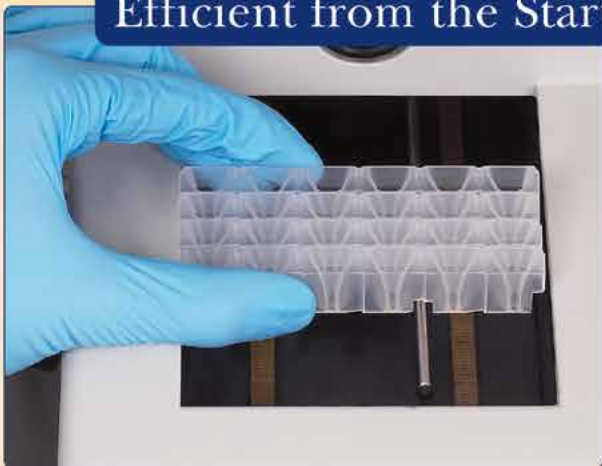
# LIAISON®

The **LIAISON®** analyzer combines flexible operating mode with a broad assay menu and leads to high efficiency due to its long walk-away time. The possibility to run up to 15 different assays at a time provides rational everyday testing even for low numbers of samples. Moreover, a throughput of up to 180 determinations per hour allows **LIAISON®** to cope easily with a very high volume of samples. It is easy to use due to its touch-screen monitor, clear software structure and the Reagent Integral which contains all assay-specific reagents.

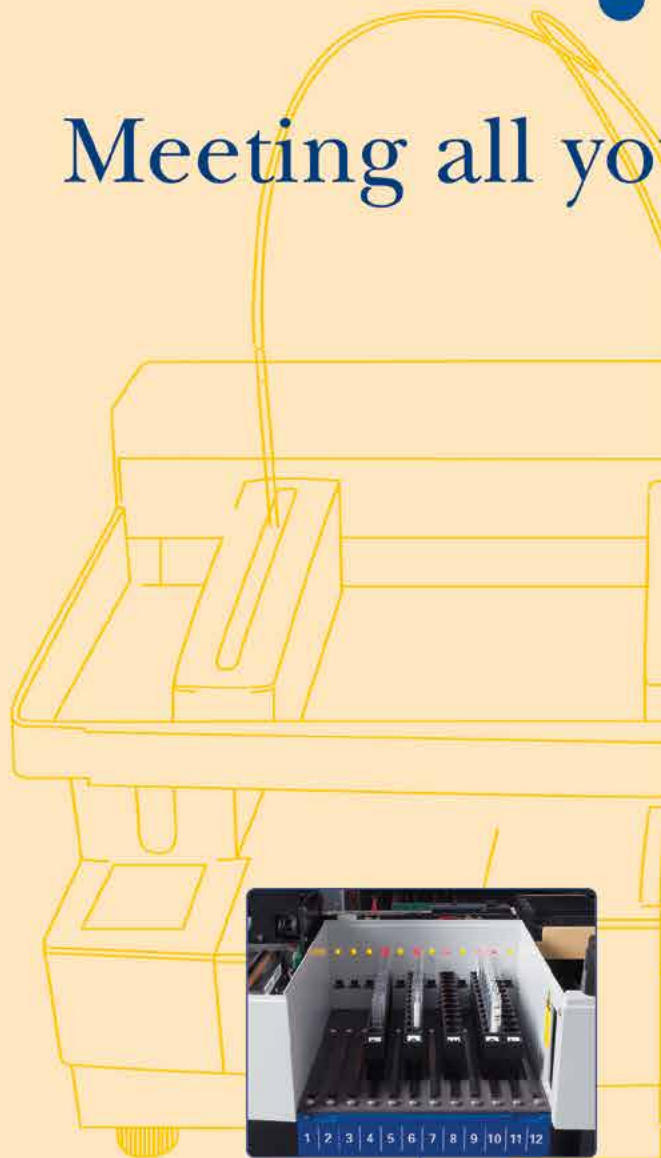
# LIAISON

## Meeting all your needs

### Efficient from the Start



- A stacker holds the reaction modules
- The stacker can hold up to 120 reaction modules or 720 determinations
- Easy reloading even during operation is assured



### Maximum Flexibility

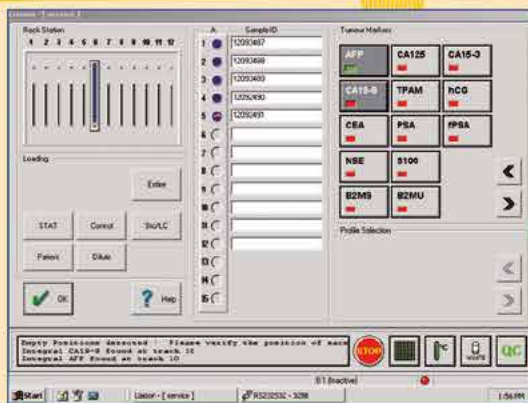
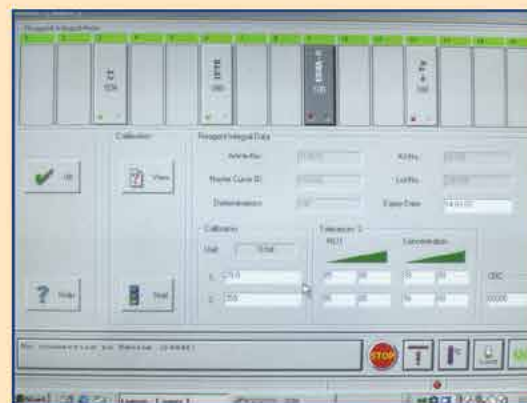
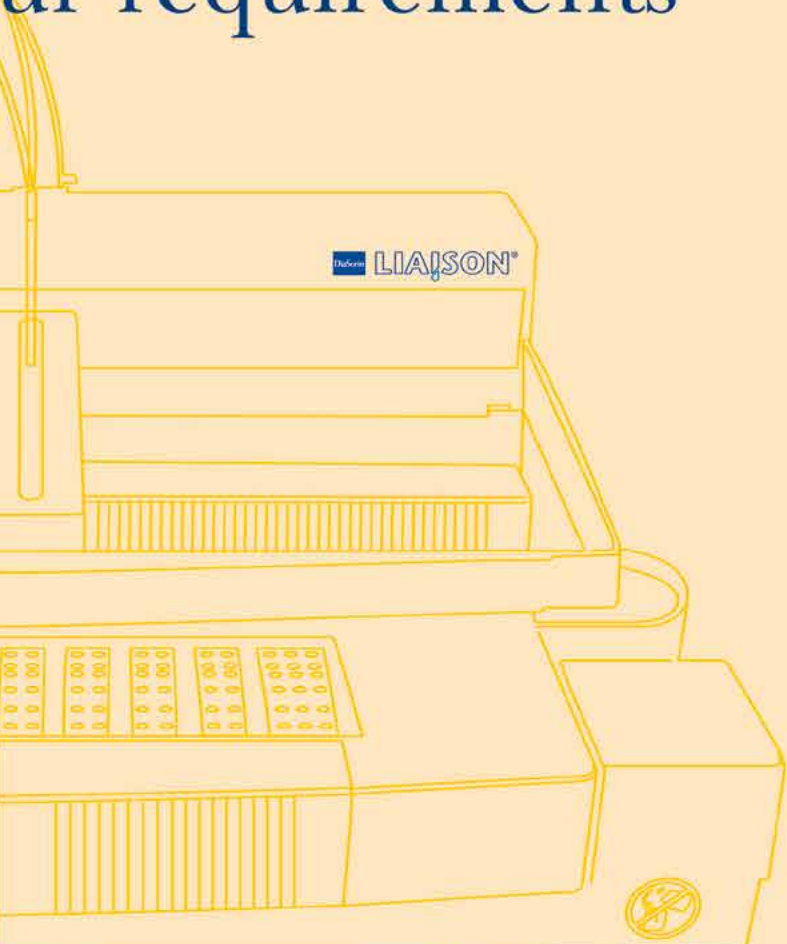


- Random access, STAT or Batch testing modes
- Rack system for loading up to 144 samples
- All common primary tubes accepted in 3 different racks
- Continuous reloading
- Flexible dilution protocol
- Automatic dilution
- Auto reflex testing
- Barcode identification

# SON<sup>®</sup>

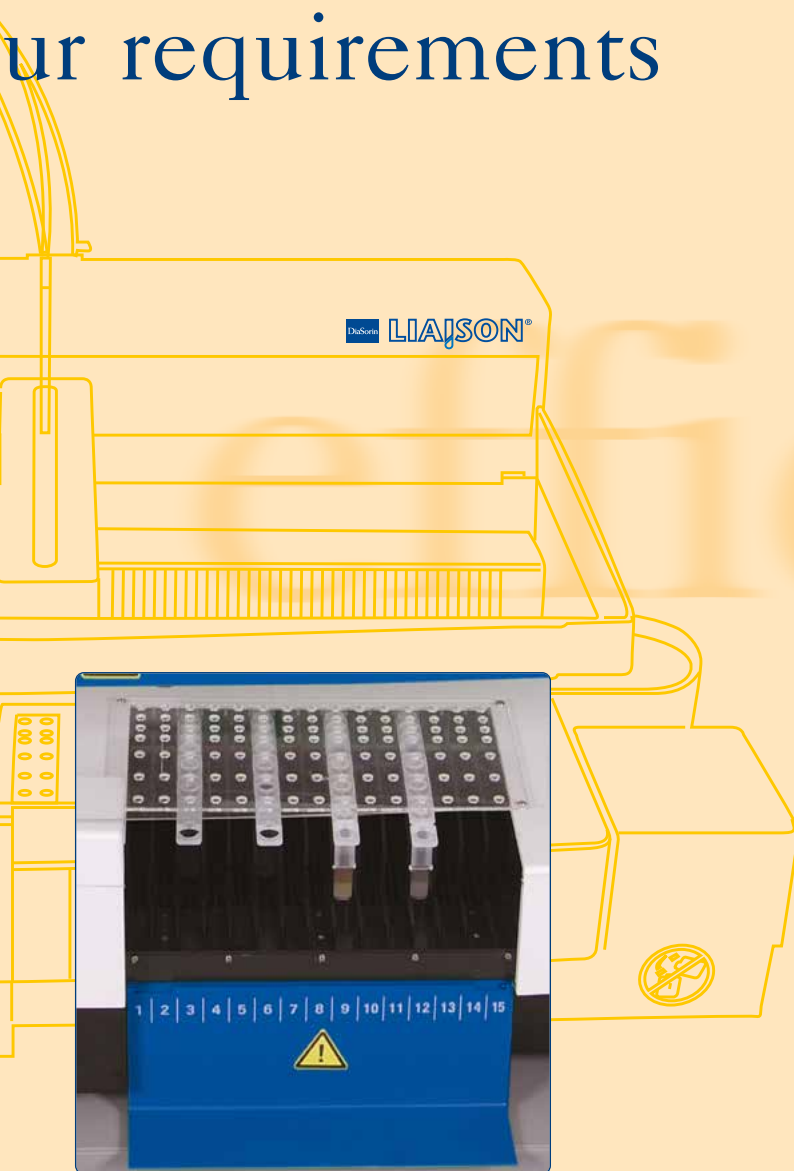
## ur requirements

LIAISON<sup>®</sup> work station

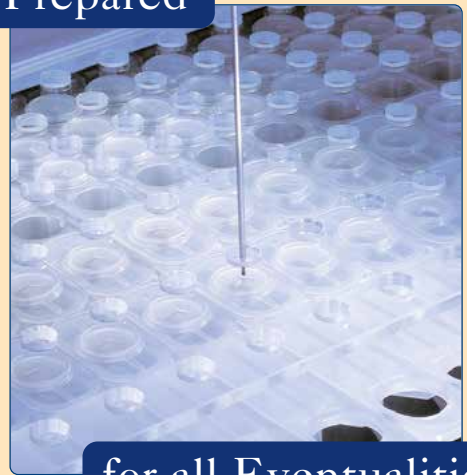


# SON<sup>®</sup>

## ur requirements



### Prepared



### for all Eventualities

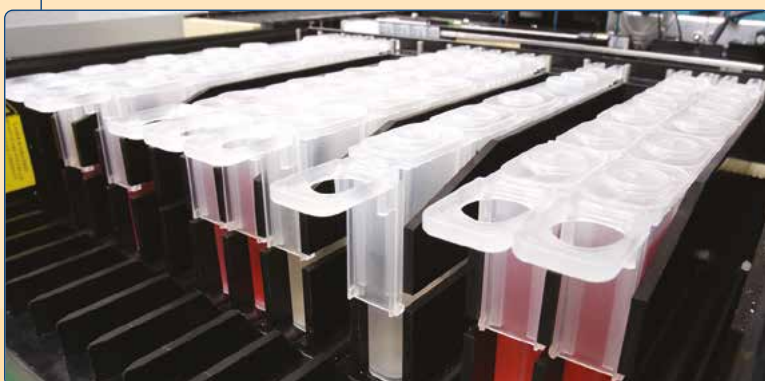
- Wide product menu both for routine and speciality assays
- Ready to use reagent integral
- Up to 15 assays on board
- Continuous reloading
- On board reagent cooling
- Long on board stability
- Master curve with 2-point calibration
- Barcode identification

### For effective use



### of Lab Resources

- Throughput up to 180 tests/hour
- Long walk-away time
- Short hands-on time
- Short time to first result



### Reagent Loading

- All reagents are ready to use
- 15 integrals may be loaded at the same time

# System Features

## MODES OF OPERATION

- Random Access
- Batch
- STAT function

## SAMPLE LOADING

- 144 primary tubes of varying size in racks of 12 samples each
- Continuous reloading

## REAGENT LOADING

- 15 assays available, allowing up to 1,500 determinations
- Continuous reloading
- Reagent cooling

## REAGENT CONCEPT

- All assay components are provided ready to use in the Reagent Integral
- Super paramagnetic microparticles
- Chemiluminescence

## CALIBRATION CONCEPT

- Master curve procedure with 2-point calibration
- Stable calibration for 2 to 6 weeks

## PERFORMANCE DATA

- Maximum throughput: 180 tests/hour
- Average throughput: 100-140 tests/hour
- Walk-away time: at least six hours or 720 tests
- Time to first result: 17 mins

## FURTHER SYSTEM FEATURES

- Clot detection
- Barcode concept for samples and reagents
- Continuous reagent and liquid inventory
- Variable dilution protocols (assay- or patient-specific)
- Auto reflex testing
- Automatic dilution of high-titre samples
- Constant incubation temperature of 37 °C
- Operation at ambient temperatures between 15 °C and 30 °C

## HARDWARE AND SOFTWARE

- IBM-compatible PC
- Colour monitor (touchscreen)

## EDP CONNECTION

- Bi-directional connection to host computer (ASTM protocol)

## DIMENSIONS

- Width/depth/height: 136x66x63 cm (needs bench top)
- Weight: 95 kg



## Reagent integral



- All components, ready to use in one Integral
- Continuous reloading
- Barcode identification

# The LIAISON® Family Collection

## Dedicated to Content



**BONE & MINERAL**  
25-OH Vitamin D TOTAL  
N-TACT® PTH Gen II  
1-84 PTH  
Osteocalcin  
BAP OSTASE®  
1,25 dihydroxyvitamin D<sup>(1)</sup>  
FGF 23\*  
Sclerostin\*\*



**THYROID**  
TSH (3rd Gen.)  
Free T3  
Free T4  
T3  
T4  
Tg  
Tg Gen II\*\*  
Anti-Tg  
Anti-TPO



**REPRODUCTIVE ENDOCRINOLOGY**  
LH  
FSH  
Prolactin  
Progesterone  
Testosterone  
Estradiol  
hCG/β-hCG  
Androstenedione\*\*  
SHBG\*\*



**ANAEMIA**  
Ferritin



**AUTOIMMUNITY**  
ANA Screen<sup>(2)</sup>  
dsDNA<sup>(2)</sup>  
tTG IgA  
ENA Screen<sup>(2)</sup>  
Cardiolipin IgG<sup>(2)</sup>  
Cardiolipin IgM<sup>(2)</sup>



**TUMOUR MARKERS**  
CEA  
Free PSA  
Total PSA  
CA 15-3®  
CA 125 II™  
CA 19-9™  
TPA®-M  
NSE  
S100  
AFP  
hCG/β-hCG  
Tg  
Tg Gen II\*\*  
β2-Microglobulin  
TK  
Calcitonin



**HYPERTENSION**  
Direct Renin  
Aldosterone



**ADRENAL FUNCTION**  
ACTH  
Cortisol  
DHEA-S



**GROWTH**  
hGH  
IGF-I



**DIABETES**  
C-Peptide  
Insulin



**SEPSIS**  
BRAHMS PCT® II Gen



**VIRAL HEPATITIS AND RETROVIRUSES**  
HBsAg<sup>(2)</sup>  
HBsAg Quant<sup>(1)</sup>  
HBsAg Confirmatory test  
Anti- HBs  
Anti- HBs plus  
Anti- HBc  
HBc IgM  
HBeAg  
Anti-HBe  
Anti-HAV  
HAV IgM  
HCV Ab<sup>(1)</sup>  
HIV Ab/Ag<sup>(1)</sup>  
HIV Ab/Ag HT<sup>(1)</sup>  
HTLV I/II<sup>(1)</sup>  
Anti-HDV\*\*



**CHAGAS**  
Chagas IgG<sup>(1)</sup>



**TREPONEMA**  
Treponema Screen



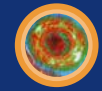
**EBV**  
EBV IgM  
VCA IgG  
VCA IgA\*\*  
EBNA IgG  
EA IgG



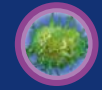
**TORCH**  
Toxo IgG  
Toxo IgM  
Toxo IgG Avidity  
Rubella IgG  
Rubella IgM  
CMV IgG  
CMV IgM  
CMV IgG Avidity  
HSV-1/2 IgG  
HSV-1 IgG  
HSV-2 IgG  
HSV-1/2 IgM  
Parvovirus B19 IgG  
Parvovirus B19 IgM



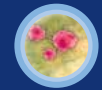
**BORRELIA**  
*Borrelia burgdorferi* IgG  
*Borrelia burgdorferi* IgM



**VZV**  
VZV IgG  
VZV IgM



**MYCOPLASMA**  
*Mycoplasma pneumoniae* IgG  
*Mycoplasma pneumoniae* IgM



**MEASLES & MUMPS**  
Measles IgG  
Measles IgM  
Mumps IgG  
Mumps IgM



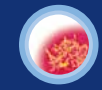
**CHLAMYDIA**  
*Chlamydia T.* IgG  
*Chlamydia T.* IgA  
*Chlamydia P.* IgG\*\*  
*Chlamydia P.* IgA\*\*



**BORDETELLA**  
*Bordetella pertussis* Toxin IgG  
*Bordetella pertussis* Toxin IgA



**H. PYLORI**  
*H. pylori* IgG



**STOOL DIAGNOSTICS**  
*C. difficile* GDH  
*C. difficile* Toxin A and B  
*H. pylori* SA  
EHEC  
Rotavirus  
Adenovirus  
Calprotectin  
Campylobacter

\* Soon available

\*\* Under Development

1 - Available on LIAISON® XL only

2 - Available on LIAISON® only

Product availability subject to required regulatory approval

FOR OUTSIDE THE US AND CANADA ONLY

**DiaSorin**

The Diagnostic Specialist

DiaSorin S.p.A.  
Via Crescentino  
13040 Saluggia (VC) - Italy  
Tel. +39.0161.487526  
Fax: +39.0161.487670  
www.diasorin.com  
E-mail: info@diasorin.it

M0870004124/AE 09/16